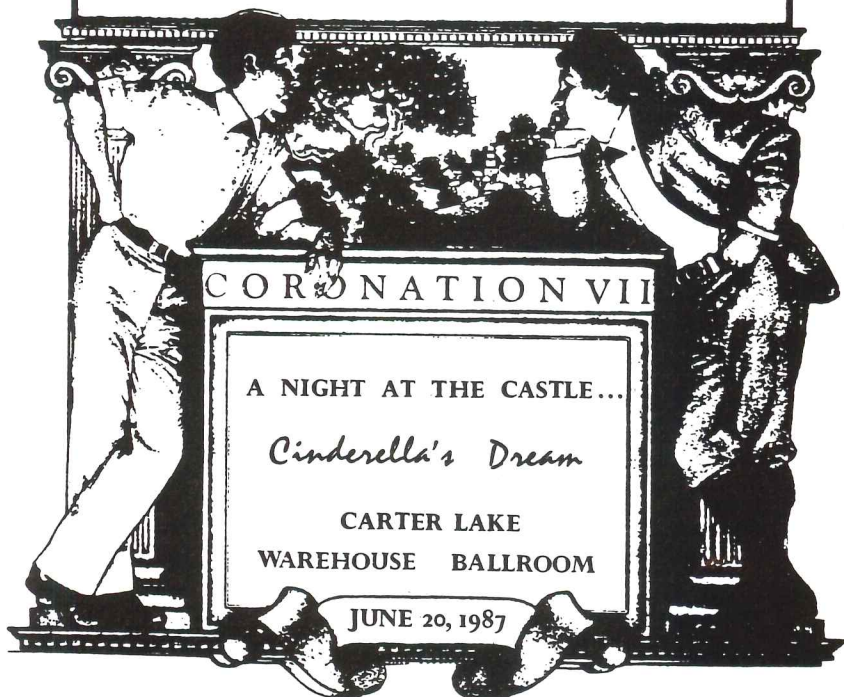
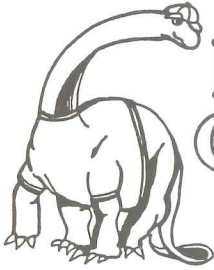


MIDWEST
G A Y
A R T S
FESTIVAL
II



THE
IMPERIAL
COURT
of
NEBRASKA





DIRT CHEAP

Recycled Sounds

"Open 8 days a week"
402/341-9500

1026 Jackson, Omaha, NE 68102



A PROFESSIONAL FOR YOUR SPECIALIZED NEEDS

EUNICE TRIBBLE

Broker Associate



ERA® PARTNERS IN
PROGRESS, INC.

Res. (402) 339-1906

Office: (402) 896-4388

5010 S. 118 ST., SUITE 200 • OMAHA, NE 68137

Each office independently owned and operated. ERA® REAL ESTATE



DIAMOND BAR

712 S. 16th Street • Omaha

Clean, Orderly, Friendly Service
No Minors Allowed

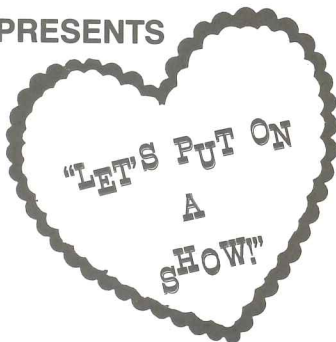
GAY/LESBIAN
INFORMATION AND SUPPORT LINE
P.O. BOX 2872
LINCOLN, NE 68502
(402) 475 - 4697

GLIS
L I N E

WED - SAT
8:00 pm - 12:00 pm
(402) 475-4697

— A NEW MUSICAL REVUE —
ACT ONE PRODUCTIONS

PRESENTS



THE JUDY GARLAND/MICKEY ROONEY
SPECTACULAR!

NOW THRU AUG. 29

Thurs. - Sat. 8:00 p.m.
French Underground
1017 Howard/Old Market

For Reservations, Call
Brandeis, TIX, or 341-3547

ITP CONSTRUCTION

- Concrete • Wood Decks • Brick Patios
- Locking Pavers • Brick or Block
- Landscape Timbers • Masonry Repairs
- Rock Walls • Custom Concrete
- Privacy Fencing

Phone
553-4132

MIDWEST GAY ARTS FESTIVAL II

Second Annual Art Show/Sale

Saturday, June 13, and Sunday, June 14, 1987

Strauss Performing Arts Center

University of Nebraska at Omaha

Participating Artists/Organizations:

Nathan Adams
Bars and Organizations of Omaha ("BOO")
BRON Arts
Keith E. Fox & Chip Jose
Friends of the River City Mixed Chorus
Dave Hustak
Imperial Court of Nebraska
Project Concern
Sandra J. Robertson
WM Industries

(Art Show participants registering after program deadline are regrettably not included in the above listing.)

=====

Join the River City Mixed Chorus!

The Chorus is a weekly chance to see your friends, sing and have a great time. We rehearse each Monday night from September through early June. We produce three major concerts each year, and hold fun fundraisers like our "Quiche-Off" and "Monte Carlo Night". We're inviting women and men to join us. New members are welcome, and if you would like to join us as a singer, or as a much-needed non-singing Friend, drop us a line at Post Office Box 315, Omaha, NE 68101. We'll put you on our mailing list.

THE
Chesterfield

OMAHA

**MON-FRI 3 PM-1 AM
SAT-SUN NOON-1 AM
1951 ST. MARY'S**



The Women's Bar

*"Shouldn't you be
sitting here?"*



Financial Planning • Investments

IDS is one of the largest financial planning companies in the nation. We have been helping people reach their financial goals for over 90 years. Financial planning the IDS way pays off today, as well as in the future.

So why wait — **CALL US TODAY** for a **FREE** 30-minute consultation. There's no obligation.

IDS

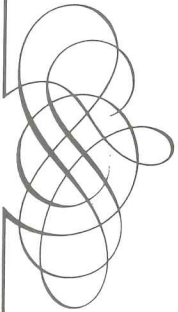
An American Express company



334-7265

Julia McPeck
101 S. 108th Avenue
Omaha, NE 68154

©IDS Financial Services Inc.



Linda Northrop, R.N.

Licensed Professional Masseuse

- HOURS BY APPOINTMENT -

Futura Coiffures
119th & Pacific

Phone:
334-8114



Adlerian Counseling Services

Toni Pastory M.S.

7701 Pacific Street ■ Suite 103 ■ Omaha, Nebraska 68114

402/393-1647

MIDWEST GAY ARTS
FESTIVAL II

Through special arrangement with IvyKnot Booking

University of Nebraska at Omaha
Women's Resource Center
and
the River City Mixed Chorus
present

Sue Fink

Saturday, June 13, 1987

7:00 p.m.

Strauss Performing Arts Center
University of Nebraska at Omaha
Omaha, Nebraska

Sue Fink appears on Ladyslipper Records.

Sue Fink

B I G P R O M I S E

Big Fun! Big Thrill! Big Promise! The
synthsational techno-pop album for
the 80's by Sue Fink!
On Ladyslipper Records. Ask for it on
LP or cassette at your favorite store.



THE WOMEN'S RESOURCE CENTER

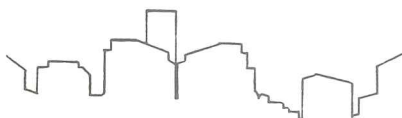
A resource and
referral agency —
available to anyone.

Located at the
University of Nebraska at Omaha
Milo Bail Student Center
Room 301
Telephone: 554-2730

*The WRC is an agency of Student Government.

BRAVO!

River City Mixed Chorus



THE METROPOLITAN CLUB

P.O. Box 24973 • Omaha, NE 68124

River City Mixed Chorus Conductor **Kevin J. Jones** graduated from Doane College in Crete, Nebraska, in 1984, with a degree in music education. After graduation, he became a member of the Iowa State University Summer Stock Theatre. He has held the position of Music Director at Grace United Methodist Church in Crete for three years. During this time, he was also Director of a joint community chorus in Crete. Theatre also keeps him busy, with productions in both Crete and Lincoln. Mr. Jones was last seen as Luntha in a production of "The King and I." He directed a production of "The Wizard of Oz" and choreographed a musical review at Doane College. His summer will be spent directing and performing in a production of "Cinderella." He hopes to continue his education in musical theatre, specifically in scenic design. Mr. Jones is presently employed in food service, and fills in as a substitute teacher at area high schools.

Accompanist **Nick Behrens** was born in Clinton, Iowa, and was transplanted to North Omaha at an early age. He graduated from the University of Nebraska at Omaha in 1981 with a Bachelor of Music degree. Mr. Behrens was a voice student of Patricia Price and has studied organ with Marilyn Musick. He has served as organist at St. Stanislaus Roman Catholic and St. John's Episcopal Churches, and is currently Organist/Choir Director at Pearl Memorial Methodist Church. Mr. Behrens has been a part of a number of musical groups, including singer in Kobzari Ukrainian Folk Ensemble, pianist for the Florentine Players, and singer in the Clarion Chamber Chorale.

Metropolitan Community Church of Omaha



Sunday Services:

Breakfast & Bible Study —
9:10 to 10:10 a.m.

Worship Services —
10:30 a.m. and 7:00 p.m.

Tuesday:

Bible Study — 7:30 p.m.

Wednesday:

Mid Week Program — 7:30 p.m.

“This is my
commandment, that
you love one another.”

— John 15:12

Rev. Jan D. Kross, Pastor
420 S. 24th
P.O. Box 3173
Omaha, NE 68103
Phone 402/345-2563

RIVER CITY MIXED CHORUS

Conductor Kevin J. Jones
Accompanist Nick Behrens

Soprano

Judith Bieker
Karen Duran •
Toni Pastory Vice President
Jeanne Richardson

Alto

Jacqie Coleman
Susan Knutzen •
Linda Northrop
Nancy Ross
Peggy Ryan
Mary Sibilia
Michelle Tarantino

Tenor

Roger Bennett
William Calkins
Gary Emenitove Secretary
John Fogarty
Tim Ivins •
Phil Owen
Jay Rich
Ron Schroeder
Clark Thompson Operations
Alan Wagner
William Wilwerding

Bass

Donald Carlson Treasurer
John Coe
Chuck Collins
Patrick Goodin
Garry Griffith Librarian
Martin Hanna
Paul Landry
John Lodes
James Poppert •
David Schuler President
Gene Spicher
Donald Zwink

• Section Leader

MIDWEST GAY ARTS FESTIVAL II

"Summer Kamp"

River 1986-87 Season
City Recital Hall
Mixed Strauss Performing Arts Center
Chorus University of Nebraska at Omaha
with Special Guests Summer Concert
Heartland Men's Chorus Sunday, June 14, 1987
5:00 p.m.

I. The River City Mixed Chorus

The Chorus

Psallite Michael Praetorius
La Cage Aux Folles Jerry Herman
arr. Kevin J. Jones

The RCMC Ensemble

Somewhere, Out There arr. Ed Lojeski
Soloist: William Calkins
Matona, Lovely Maiden Orlando di Lasso
Get Happy arr. Hawley Ades
Goodbye Love Ken Kraintz

The Chorus

"Company" Medley Stephen Sondheim
Bosom Buddies Jerry Herman
Duet: Phil Owen & Gene Spicher
Hark, I Hear the Harps Eternal arr. Alice Parker
We Go Together arr. Ed Lojeski

Intermission

II. The Heartland Men's Chorus

performing selections from the following:

Brothers, Sing On!	Edvard Grieg arr. Howard D. McKinney
As Beautiful As She	Eugene Butler
The Pasture Stopping by Woods (from "Frostiana" on poems of Robert Frost)	Randall Thompson
I Hear a Voice A-Prayin' Poor Man Lazrus	Houston Bright Jester Hairston
Ave Verum	Gabriel Fauré
An American Salute	Ed Lojeski

III. The Combined Choruses

America the Beautiful	arr. Joyce Eilers
On Broadway	Roger Emerson arr. Kevin J. Jones
Ching-a-Ring Chaw	Aaron Copland arr. Irving Fine

=====

Acknowledgements

Tom Cech
Friends of the River City Mixed Chorus
Dr. Linda M. Hurstad
The Imperial Court of Nebraska
J.A. Jones and Associates
KIOS Radio
Lowe Avenue Presbyterian Church
Metropolitan Community Church of Omaha
Nebraska Arts Council
The New Voice of Nebraska
Ron Nix of BRON Arts
UNO Women's Resource Center

HEARTLAND MEN'S CHORUS

Conductor Gina Scaggs
Accompanists Douglas Maag,
J. Kent Barnhart

Tenor I

Charles Comstock •
Jeffrey W. Gosney
Keith E. Grahl
Dennis Hayden
James D. Moraché **President**
Don Smith
Mark Stephens
Perry Phillips
Gregory Thomas

Tenor II

Anthony Baptist
Jody Bennett
Jim Burrus
Roger A. Gladden **Treasurer**
Stephen Johnson
Larry Ruggeri
Randell Stewart **Vice President**
David Westman •

Baritone

J. Kent Barnhart **Secretary**
Tim Bolton
Phil Bundy
Scott Burnett
Dick Caskey
David W. Dowler
Bob Glinn
Art Glover
Randy Hite
Dan Jensen
Chuck Hewitt
Bill Lohman
Dave Ludwig
Paul Marshall •
M. Lance Moorman
Yul Stell
Aaron Swar

Bass

Jim Burton
Wayne Ferris
Mark Hay
Fr. Ambrose Karels
Douglas Maag •
Bill Strong
Robert Sullivan
Neil Soloman
Frank Woltkamp
• Section Leader

Mike Fitzpatrick
MSW, ACSW

**Couple Counseling,
Parenting and
Step-Parenting,
Individual Counseling
(depression,
coming-out to
friends and parents)**

**Omaha phone
397-0330**

P.R. Outy's

**Novel,
but not a book!**

**1121
Farnam on the Mall**

Heartland Men's Chorus Conductor **Gina Scaggs** holds dual Bachelor Degrees from the University of Kentucky in Music Education and Vocal Performance, and is currently pursuing a Master's Degree in Choral Conducting at the University of Missouri at Kansas City Conservatory of Music. Ms. Scaggs also spent an entire year with the highly-respected Gregg Smith Singers in New York City. She currently augments her busy schedule by being organist at St. Peters Catholic Church in Kansas City, and will be Music Director for Theatre Under the Stars' 1987 production of "Oliver!"

Accompanist **Douglas Maag** holds a Bachelor of Music Degree in Organ Performance and Pedagogy from the University of Iowa, where he was a student of Dr. Delbert Disselhorst. Prior study included eight years of piano, including four years at the Conservatory of Music in Quincy, Illinois, and two years of organ. College study also included four years of voice. In addition to being a charter member of the Heartland Men's Chorus, he also serves as Bass section leader. He is a member of the Kansas City Civic Chorus as well as the 300-plus voice of Village Presbyterian Church.

Accompanist **J. Kent Barnhart** studied piano performance with Joanne Baker at the University of Missouri at Kansas City Conservatory of Music. He has served as Musical Director for several musical theatre productions, as well as giving solo recitals. He also appeared as soloist with the Kansas City Philharmonic in their 1983-84 concert season. He is a charter member of the Heartland Men's Chorus, and serves as its present Secretary on the Executive Board.

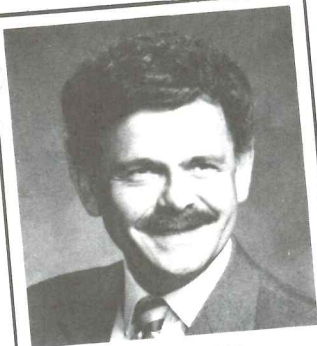
NAP . . .

1½ years of concern and service

"That's what friends are for!"

*** Nebraska AIDS Project**

- **Nightly Hotline**
6 to 11 p.m.
342-3233
- **Support**
Groups
- **Outstate**
Hotline
1-800-782-AIDS



BOB BONACCI
Sales Associate

Wurdeman
of Omaha Co. **W**
Realtors

Off. 402-393-3444 87th & Pacific St.
Res. 402-397-3399 Omaha, Neb.
68114

SECOND CHANCE

"Just Like Grandma's"

ANTIQUES
COLLECTABLES
VINTAGE CLOTHING

OPEN 7 DAYS A WEEK

1 Block West of the Heart of the Old Market
1210-1212 Howard
Omaha, NE 68102
402/346-4930

CONTRIBUTORS

River City Mixed Chorus
P.O. Box 315
Omaha, NE 68101-0315

ANGEL

Anonymous
J.A. Jones & Associates
Joseph Malec, Jr.
Ron Nix of BRON Arts
Union Pacific Foundation

BENEFACTOR

Anonymous
David Catalan
Gary A. Emenitove
Robert H. Geisler
To John, Jud, Marilyn, and
Linda from M.E.W.
Michael McCabe
Brent R. Mower
Dennis L. Pierce
John Prouty

SPONSOR

Nathan J. Adams
Anonymous (3)
Greg Barry
Judith A. Bieker
Georgia Bichekas
John Coe
Darrell Dick
Mike Fitzpatrick
James C. Hof
Colleen D. Kibble-Vest
Michael L. Kinsel
George E. Kleine
Kathryn P. Larimer
H. Griff Lofton, III
Donald C. Longmore
Larry L. Mauller
C. Julian Thompson
Daniel R. White

PATRON

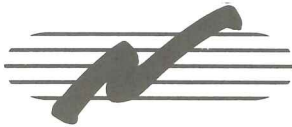
Anonymous (4)
Merle Danaher
Jim White

The above contributions for the 1986-87 season were received between July, 1986, and June, 1987. Any omissions are regretted.

The **River City Mixed Chorus** and the **Heartland Men's Chorus** are members of **GALA Choruses** (the Gay and Lesbian Association of Choruses), an alliance of men's, women's, and mixed choruses in the United States and Canada. GALA Choruses produces a choral festival every three years, with the next in Seattle in 1989. GALA Choruses also plans annual conferences for directors and managers, addresses problems of mutual concern, and assists with the sharing of music holdings.

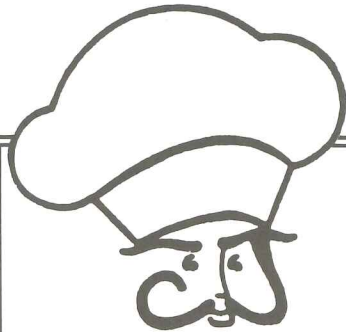
Member choruses are in Albuquerque, Atlanta (2 choruses), Baltimore, Berkeley, Boston, Buffalo, Champaign-Urbana, Chicago (3), Cincinnati (2), Dallas, Dayton, Denver (2), Detroit, Ft. Lauderdale/Miami, Houston, Kansas City, Lansing, Long Beach, Los Angeles (3), Madison, Milwaukee, Minneapolis/St. Paul, New Haven, New Orleans, New York, Omaha, Ottawa, Philadelphia (2), Phoenix, Pittsburgh, Portland, Providence, Richmond, Rochester, Sacramento, San Diego (2), San Francisco (3), San Jose, Sacramento, Seattle, Toronto, Vancouver, and Washington, D.C.

GALA Choruses is a non-profit, tax exempt organization with offices at 4016 SW 57th Avenue, Portland, OR 97221.



Nebraska Arts Council

The Nebraska Arts Council, a state agency, has supported this arts event through its matching grants program funded by the Nebraska Legislature and the National Endowment for the Arts, a federal agency. The Nebraska Arts Council has a variety of grants and service programs to help support arts events throughout Nebraska. For information on how the Nebraska Arts Council can be helpful to your community or organization, contact the Nebraska Arts Council, 1313 Farnam on-the-Mall, Omaha, NE 68102-1873. Phone: (402) 554-2122.



THE CAKERY

Custom Decorated
Cakes For All
Occasions

CHRIS JANICEK
8429 Blondo 391-0967

THANKS TO OUR FRIENDS

A special mention needs to be made about a group of people who work behind the scenes with the River City Mixed Chorus. These non-singing members make up our Friends, the "magic behind the music"; devoted individuals who come to rehearsals, attend meetings, work on committees, and do much of the behind-the-scenes work that makes today's concert possible.

They're participating in this concert, but you won't see them on stage. They don't get the opportunity to stand on stage and look into your faces. They feel the glow of sweet applause, but only from the sidelines.

So when you're clapping for us, throw in an extra round for our Friends. They'll appreciate it, just as we appreciate them.

Subscribe To

P.O. BOX 80819
Lincoln, NE 68501

Nebraska's Longest Running
Gay/Lesbian Publication

*The
New Voice*

\$12.00

(Subscription Rate Increase August 1, 1987)

They're Just Terrific!

WATER-FILLED SHOE INSOLE

Water-filled insoles constantly cushion & massage your feet, giving absolute and superb comfort with every step you take.

- Cushions calluses and bunions
- Acts as a shock absorber
- Helps relieve arthritic pain
- Aids & stimulates blood circulation
- Helps combat leg, joint & back pains

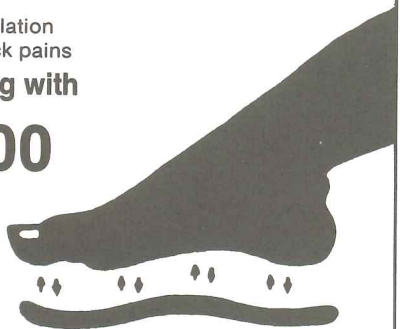
Send shoe size along with

\$7⁰⁰

(+ 6% tax)

**SCOTTE
SHOPPE**
**FOOTE
CARE
PRODUCTS**

P.O. Box 24978
Omaha, NE 68124



(\$1.00 per pair will be donated to the RCMC when order is accompanied by this advertisement.)



**Futons
Graphics**

**Cards • Mugs • Clocks
Lamps • Posters
Organizers • Furniture
Frames • Glassware
Gifts • Wraps • Ribbon
Writing Paper • Rugs**

**for little things
and big stuff**

**design
express**

1008 Howard Street • 342-0442

**YOUR SUPPORT
IS WELCOME**

Ticket sales never cover all the expenses of presenting a concert. To fund its activities and assure its continuing operation, the River City Mixed Chorus relies on the generosity of its friends. Your contribution is welcome in any amount to the Chorus, a non-profit, tax exempt corporation. Contributions will be listed in the following categories:

Patron \$10-\$24
Sponsor \$25-\$99
Benefactor \$100-\$249
Angel \$250 and up

Please indicate how you wish your name to appear in our printed program. Checks may be mailed to: River City Mixed Chorus, Post Office Box 315, Omaha, Nebraska, 68101.

**We know
your type.**

J. A. Jones & Associates
8998 L Street
331-4030

Northwest
Hair Design

453-5151
4331 No. 65th St.
Omaha, Ne. 68104

Cindy Weber



Northwest
Hair Design

453-5151
4331 No. 65th St.
Omaha, Ne. 68104

Roger Bennett



MAX (mák's) *n.*, THE
GREATEST POSSIBLE
QUALITY, OR DEGREE
— *adj.*, OR OF HAVING
THE GREATEST
QUALITY OR HIGHEST
DEGREE THAT CAN
BE ATTAINED.

T H E M A X